



MICROSCOPY EQUIPMENTS

AIISHIL INTERNATIONAL

18/1920, Shreeji Arcade, 2nd Floor, Opp. Nitin Co. Thane (w) 400602. INDIA.

Phone : 022- 25390474, 25390475, Fax : 022-25390476

E-mail : infob@aiishilgroup.com

"AIISHIL" DISSECTING MICROSCOPE :

JD-1 : Heavy round base with precisely designed body. Sensitive focussing, done by rack and pinion arrangement. Revolving arm provided for moving magnifying lens over full stage area. 85mm x 75mm with glass plate.

Illumination : A plano-concave mirror fitted in fork for light reflection.

Optics : 10x & 20x Eyepieces



JD-1

"AIISHIL" STUDENT MICROSCOPES :

A straight tube monocular research microscope. Body inclinable upto 90° with separate coarse and fine adjustments. Triple revolving nose-piece. Fixed stage with stage clips, sub-stage plano-concave reflecting mirror with fixed condenser/iris diaphragm

J-1 : With 10X, 15X or 5X Huygenian eyepieces (2 Nos.) and 10X, 45X objectives.

J-1A : Same as J-1 but with moveable condenser.



J-1

"AIISHIL" MEDICAL MICROSCOPES :

A straight tube monocular research microscope. Body inclinable upto 90° with separate coarse and graduated fine adjustments reading to .002 mm. Triple revolving nose-piece, double lens condenser N.A. 1.2 with iris-diaphragm and rack-n-pinion adjustment. Fixed stage with detachable mechanical stage, sub-stage plano-concave reflecting mirror inter-changeable with sub-stage microscope lamp.

J-2 : With 10X, 15X or 5X Huygenian eyepieces (2 Nos.) 10X, 45X, 100X oil-immersion (spring loaded) Achromatic objectives.

Magnification : upto 1500X

J-2A : Same as above but with fixed mechanical stage, export quality, as per ISI specifications. Supplied in a Thermocol box & then Wooden Box.



J-2

"AIISHIL" INCLINED MICROSCOPES :

A versatile microscope with observation tube inclined to 45° rotatable through 360°, built-in base illumination with light intensity control and 6V-20W halogen bulb. Separate coarse and graduated fine motion knobs. Slides on ball bearing ball guides. Fixed graduated square co-axial mechanical stage. Sub-stage moveable condenser N.A. 1.2 with iris-diaphragm. Quadruple revolving nose-piece.

J-3 : With 10X, 15X or 5X Huygenian eyepieces (2 Nos.) 5X, 10X, 45X, 100X oil-immersion (spring loaded) Achromatic objectives.

Magnification : upto 1500X

J-3E : Same as above but with Wide-field 10X eye-piece and 15X or 5X Huygenian eyepiece and built-in co-axial mechanical stage.



J-3

"AIISHIL" BINOCULAR MICROSCOPES :

Specifications of body as above but provided with Binocular observation head inclined at 45° rotatable through 360° and with inter-pupillary adjustment.

J-3A : With Huygenian eye-pieces 10X, 15X (Paired) Achromatic objectives : 5X, 10X, 45X & 100X - oil immersion (spring loaded) detachable mechanical stage.

Magnification : 50X to 1500X.

J-3AH : Same as J-3A but with 10x w.f. Paired eye piece and built-in co-axial mechanical stage.



J-3A

"AIISHIL" TRINOCULAR MICROSCOPES :

Structural specifications same as inclined and Binocular microscopes but provided with a Trinocular observation head which combines a Binocular observation head and a vertical single tube for photomicrography. Complete with a built-in co-axial mechanical stage.

J-3B : With paired eye-pieces Wide field 10X, Huygenian eye-pieces 5X, 15X, Achromatic objectives 5X, 10X, 45X, 100X - oil immersion (spring loaded) with periplan eyepieces P-10X for photomicrography.



J-3B

"AIISHIL" LATEST CO-AXIAL CONCEPT MICROSCOPY :

A quality Research Microscopy System with Ball Bearing Guideways for highly sensitive focusing system free of even slightest back-lash.

Salient Features :

- High transmission Binocular head with multi-layer coated prismatic system.
- Co-axial focusing system.
- Co-axial mechanical stage for X & Y movements which provides extra large viewing area.
- Quadruple nose-piece with Ball Bearing mountings providing accurate alignment.
- Built-in base light 6V-20W illumination with continuously variable intensity.
- Abbe condenser N.A. 1.2 moveable on rack-n-pinion with iris diaphragm.
- Optics specially designed to accommodate Neubauer chamber or Blood Cell counting chamber.
- Interchangeable to inclined observation tube or Trinocular.
- **All lenses hard antifungus coated.**

Optical Combinations :

Achromatic Objectives : Parafocaled and centred- 5X, 10X, 40X(spring loaded) 100X (spring loaded)

Huygenian Eyepieces : 10X (Paired) Super Wide Field

JZB : Senior Binocular Microscope-**Fine Vision**



JZB

"AIISHIL" CLOSE CIRCUIT VIDEO EQUIPMENT (CCTV) /

"AIISHIL" COMPUTER COMPATIBLE MICROSCOPE :

JZD : Specially designed for use with microscopes. Comprises of Microscope Camera System with Imported Camera, also compatible with Computer/VTR/VCR System. (Optionals), CCTV Video Monitor providing high resolution.

Coloured closed circuit Video Equipment with digital Highest resolution Camera & Monitor.

Salient Features :

- Coloured camera CCD high performance compatible enough to scan 430 lines with 8mm or 16 mm iris focus.
- Can be attached with computer through IC cards.
- Can be seen on VDU.
- Can be stored on floppys or hard disks.
- Can be printed out on any high resolution laser printer.
- Can be compared with old data stored and present picture at a time on screen through software.



JZD

"AIISHIL" STEREO BINOCULAR MICROSCOPE :

Versatile microscope to observe objects upto 50 mm with trans-illumination base having 100 mm dia-interchangeable with milky or transparent round glass plate. Binocular Head with Interpupillary adjustment from 55° to 75°.

- JS-2** : Straight Binocular Head and fixed objectives 2X or 3X w.f. paired eyepiece 10x or 15x.
- JS-3** : Inclined Binocular Head inclined at 45° with Eyepiece 10X or 15X w.f. paired objective 2X and 4X/3x and 5X.
- JS-4** : As per JS-3 but with trans Illumination base suitable for artificial and transmitted light arrangement and elbow hand rest.
- JS-5** : As per JS-3 but with built in light base for incident (Epi.) and sub stage (transmitted) for Individual or simultaneous use.
- JS-6** : As per JS-3 but with revolving turret mount for quick change of objectives.



JS - 6

"AIISHIL" STEREO ZOOM BINOCULAR MICROSCOPE :

JS-BZ : For viewing flat 3-Dimensional image having parafocaled zoom objectives providing continuously variable magnification upto 200X depending upon eyepieces and auxillary lenses.

Standard Features:

- Binocular tube with an inclination of 45° for greater ease of observation.
- Microscope Zooming ratio 1:5.
- Extra wide field eyepieces 10x (Paired).
- Magnification 10x to 50x. (Standard).
- Rack-Pinion focussing stroke 50 mm.
- Crisp, erect images with high resolution and excellent stereoscopic effect.
- Standard Working distance 80 mm, regardless of magnification.
- Interpupillary distance from 54 to 75 mm.
- Binocular body can be rotated at full 360° and locked in any position desired.
- Once brought in focus, image remains clear and sharp throughout the whole zoom range.
- Dual Illumination system having incident and transmitted illuminators, for Individual use or both at a time controlled through solid state built-in transformer for 6 Volts 20 Watts halogen Bulbs.
- Packed in plywood Storing cabinet with operation manual, vinyl cover etc.

JS-BZ : Same as above but with Trinocular Head.



JS-BZ

"AIISHIL" METALLURGICAL MICROSCOPE :

Microscope having bright field vertical illuminator with high intensity low voltage lamp 6V-15W with adjustable field and aperture, iris diaphragm with slots for dropping coloured filters. It provides excellent bright field in incident illumination of opaque and semi-opaque specimen. The same can be used as normal Pathological microscope. Provided with triple revolving nosepiece, builtin co-axial mechanical stage. Supplied in Plywood box.

JS-11 : Monocular inclined observation at 45° rotatable through 360° with wide field eyepiece 10X, Huygenian eye pieces 15X or 5X paired (2 Nos.) and objectives : M10X, M40X (spring loaded)- Magnification : 50X to 600X.

JS-14 : Binocular observation head inclined at 45° rotatable through 360° with wide field eyepiece 10X and Huygenian eyepieces 15X or 5X Paired-(2 Nos.) Objectives : M10X, M40X (spring loaded). Magnification : 50X to 600X.

JS-16 : Trinocular observatin head inclined at 45° rotatable through 360° with wide field eye piece 10X Huygenian eyepieces 15X or 5X (Paired)-(2 Nos.) and objectives : M5X, M10X, M45X (spring loaded). Magnification : 25X to 675X.



JS - 16

"AIISHIL" INVERTED TISSUE CULTURE MICROSCOPE :

Designed to observe tissue cultures, protozoans, planktons and any type of microbes in liquid media in Cavity slides, Cavity blocks, watch glasses or petri dishes etc. involving wide range of applications. Mounted on a pole and can be positioned in vertical height range upto 140 mm. Complete with Koehler's illumination system with focusable condenser lens with iris-diaphragm filter-carrier etc.

JS-32 : Binocular observation head inclined at 45° with Wide field 10X eyepiece (Pair) & PH 5X, PH 10X, PH 20X, PH 40X Achromatic objectives.

JS-34 : With Trinocular observation head with 10X Wide field eyepiece (Pair) & PH5X, PH 10X, PH 20X, PH 40X objectives.



JS-32

"AIISHIL" POLARISING MICROSCOPES :

JS-34 : Standard polarising microscopes equipped with strain-free plan achromatic objectives for transmitted light observation. Builtin halogen illumination system and high quality coated optics make the equipment versatile and high quality instrument.

Polarising intermediate attachment magnification 1.2X has builtin Bertrand lens unit on a rotating turret for conoscopy, a swing in/swing out analyser and DIN standard compensatory slot accommodating 1st order red sensitive tint plate and ¼ wave length radiation plate.

The microscope stand has a quadruple ball bearing nose-piece, co-axial coarse and fine motions moving on ball bearing guide. Sub-stage polariser on strain-free Abbe condenser N.A. 1.25.



JS-34

JS-41 : MONOCULAR INCLINED POLARISING MICROSCOPE :

Specifications as above with 45° inclined monocular observation tube with following optical combinations :

Focusing eye pieces : HWF 10X with cross & HMF 10X

Plan achromatic objectives: M5X, M10X, M40X

Magnification : 50X to 400X

JS-42 : BINOCULAR POLARISING MICROSCOPE :

Specifications as above with 45° inclined Binocular observation head and following optical combinations :

Focusing eye pieces : (One Pair) HWF 10X with cross & HMF 10X

Plan achromatic objectives : M5X, M10X & M40X

Magnification : 50X to 400X

“AIISHIL” FLUORESCENT MICROSCOPE

JS-51 : Capillary examination-An introduction

This technique is a new, highly sensitive rapid method of diagnosing malaria. It is also useful in the diagnosis of filariasis and leptospirosis. The principle of this method is the malaria parasite picks up fluorescent stain into their nucleus and cytoplasm, so that its morphologic characteristics can be examined by fluorescent microscopy. The nucleus appears green and the cytoplasm reddish orange,

The Capillary is coated with Acridine orange on its inside. Parents Blood is loaded into this capillary and centrifuged at 12000 rpm for 5 minutes.

The Blood components settle at different levels in the capillary. These different layers are displayed in the picture. Examination of the area just below granulocyte-RBC junction helps to detect the malarial parasites, as these are concentrated in this area upto 1000 times. Examination of Lymphocyte/monocyte layer using transmitted light helps to detect the schizonts, and gametocytes which gets concentrated in this layer very easily.

Method of Examination:

The granulocyte layer is then seen under 62x oil objective. By changing the light source to fluorescent light the parasitic forms can be seen as greenish orange stained structures. Using only transmitted light the parasitic forms are seen as block pigmented structures as shown in the preceding photomicrographs.



JS-51

‘AIISHIL’ OPTIONAL ACCESSORIES FOR MICROSCOPES :

- **PHASE CONTRAST ATTACHMENT** : For observation of inner structures of living and unstained micro-organisms and tissue cells.
- **DARK FIELD CONDENSER** : For image enhancement in critical microscopy.
- **MICROMETER EYE PIECE, Graph & Stage** : For measuring microscopic structures & drawings.
- **PHOTOMICROGRAPY** : SLR 35mm camera, cable release cord, microscopic adapter or Digital Camera/CCD.
- **Double demonstration eye-piece** : For dual observation.
- **Camera Lucida (Prism Type)** : For making drawings of a slide material.
- **Camera Lucida (Mirror Type)** : For making drawings.
- **Microscope Lamp (Substage)** :
- **Eye-Piece** 10X coated wide field.
- **Pointer Eye-piece** 10X, 15X, 5X.

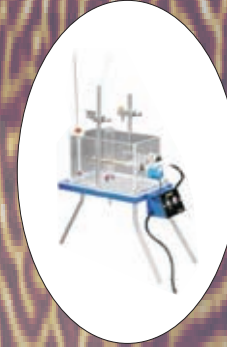
OUR OTHER PRODUCT RANGE



VISUAL EQUIPMENTS
MICROTOMY EQUIPMENTS



CLEAN AIR SYSTEM
HEAT & REFRIGERATION
SYSTEM



BLOOD BANKING
GENERAL LABORATORY
SYSTEM



PHARMACEUTICAL
PHARMACOLOGY EQUIPMENTS



MEDICAL ANATOMY
INSTRUMENTS
ELECTRONIC ANALYTICAL
INSTRUMENTS



INCINERATORS
ENGINEERING COLLEGE
EQUIPMENTS



AIISHIL INTERNATIONAL

18/19/20, Shreeji Arcade, 2nd Floor, Opp. Nitin Co. Thane (w) 400602. INDIA.

Phone : 022- 25390474, 25390475, Fax : 022-25390476

E-mail : infob@aishilgroup.com